



## Tyne and Wear City Region Employment & Skills Board

### Performance Update – Quarter 3 2007-08

This report forms part of a series of quarterly updates keeping partners informed about progress against the Employment & Skills Board's key performance targets.

---

#### **Background**

Following sign off of the Tyne and Wear City Region Employment & Skills Delivery Plan in April 2007, work commenced with DWP to detail the various targets for the City Region.

In August 2007, the City Region submitted detailed proposals for key targets covering the following areas:

- Key Benefit Claimants
- Employment Rate
- Black and Minority Ethnic Groups (BME)
- Economic Activity
- Child Poverty
- Skills and Qualifications

Initial sign off was received for the reductions in key benefit claimants and employment rate targets. Sign off for the additional targets was received from DWP on 21<sup>st</sup> December 2007.

Following submission of the target proposals the City Region commenced monitoring of performance. The Employment & Skills Executive Team carry out this role with performance reported to DWP via a Quarterly Monitoring Report and through ongoing evaluation of the City Strategy Pathfinders.

The City Region Employment & Skills Board, Sub Group and Advisory Group will also receive this quarterly update to provide them with information on progress against achievement of these targets.

---

#### **Performance – Quarter 3 2007-08**

##### **Key Benefit Claimants**

The City Region target is to reduce the number of Key Benefit Claimants by 13.7% across 90 Priority Wards between August 2006 and May 2009. This includes a profiled reduction of 10.7% and a stretch target of 3% on this figure. This is a numerical reduction in key benefit claimants from 88,305 to 76,507 across the 90 Priority Wards.

Table 1 below shows the baseline position for August 2006, the profile for May 2009 (what we could expect to happen without any intervention) and the target for the City Region for May 2009.

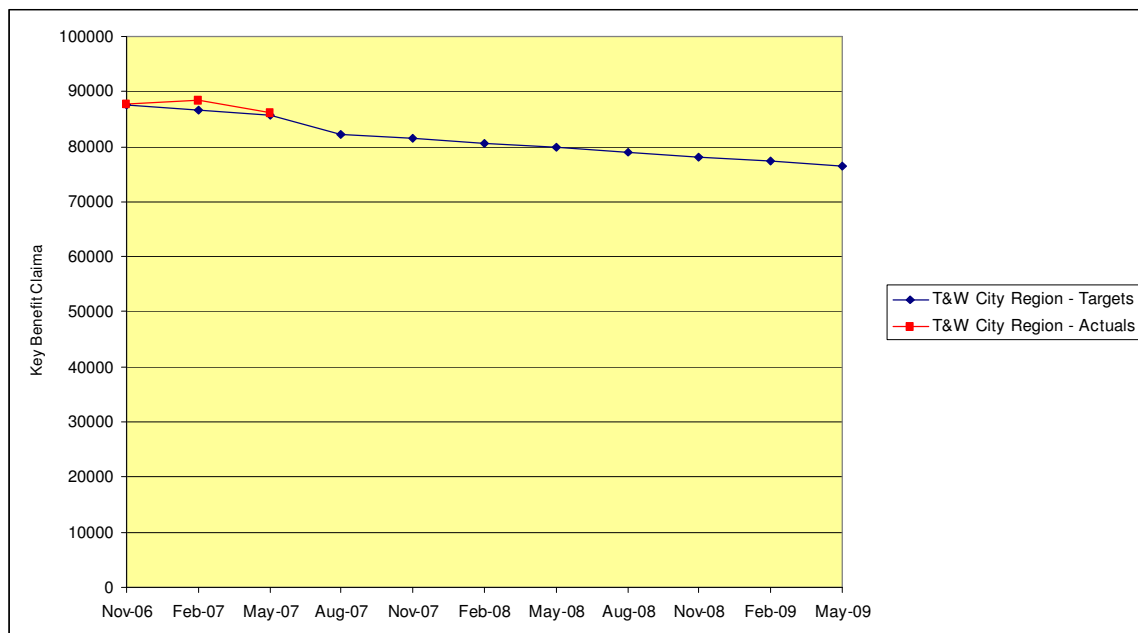
**Table 1 – Key Benefit Claimants Target - Tyne and Wear City Region**

Area	Baseline – Aug 06	Profiled – May 09	Profile - % increase/ decrease	Target – May 09	Target – overall % increase/ decrease
All 90 Priority Wards	88,305	78,873	-10.7%	76,507	-13.7%

Table 2 shows progress to date against these targets, which have been profiled for each quarter to enable the City Region to monitor its progress towards the final May 2009 figure.

The City Region has seen a reduction in key benefit claimants from the 88,305 baseline figure of August 2006 to 86,225 in May 2007, a reduction of 2080 or 2.36%. The profiled position for May 2007 was 85,728, which means the City Region needs to reduce key benefit claimant numbers by a further 497 in addition to the profiled reductions to keep on track to achieve the May 2009 target.

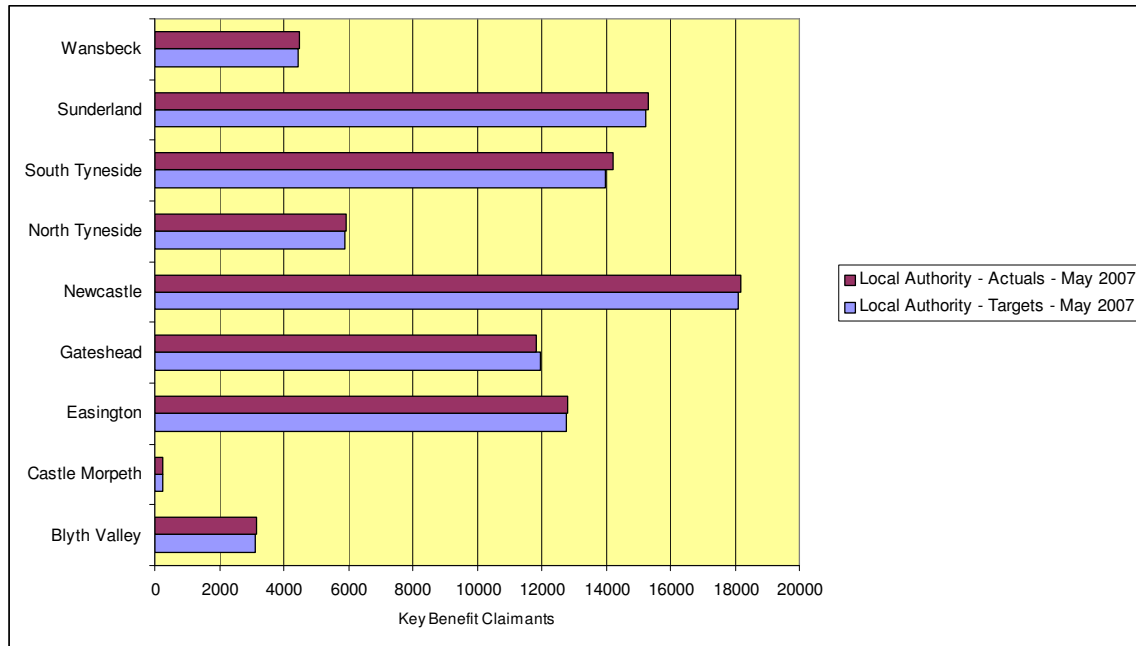
**Table 2 – Key Benefit Claimants – City Region Actuals against Targets to May 2007**



In addition to the overall City Region target, the Key Benefit Claimant reduction targets have been broken down to Local Authority and Ward level to provide an indication of what is required at a local level and focus delivery to contribute to the overall achievement of the City Region target.

Table 3 below shows that all of the Local Authorities are either on track or very close to achieving the position required to maintain progress towards the May 2009 target. One Local Authority area has exceeded the position required in May 2007.

**Table 3 – Key Benefit Claimants – Local Authority Actuals against Targets in May 2007**



Overall, progress towards the May 2009 target for key benefit claimant reductions is being maintained and is recovering after key benefit claimants increases were recorded for many areas between December 2006 and February 2007. All areas are now recording reductions in line with those expected.

### Employment Rate

The City Region target is to increase the Employment Rate from 69.7% in September 2006 to 70% by June 2009. This includes a 0.2% profiled reduction in the Employment Rate for the City Region during this period with a 0.5% stretch increase.

The target is an aggregation of the employment rates for the nine local authorities, which contain the priority wards identified as being the most deprived in the City Region.

Table 4 below shows the baseline position for September 2006, the profile for June 2009 (what we could expect to happen without any intervention) and the target for the City Region for June 2009.

**Table 4 – Employment Rate Target – Tyne and Wear City Region**

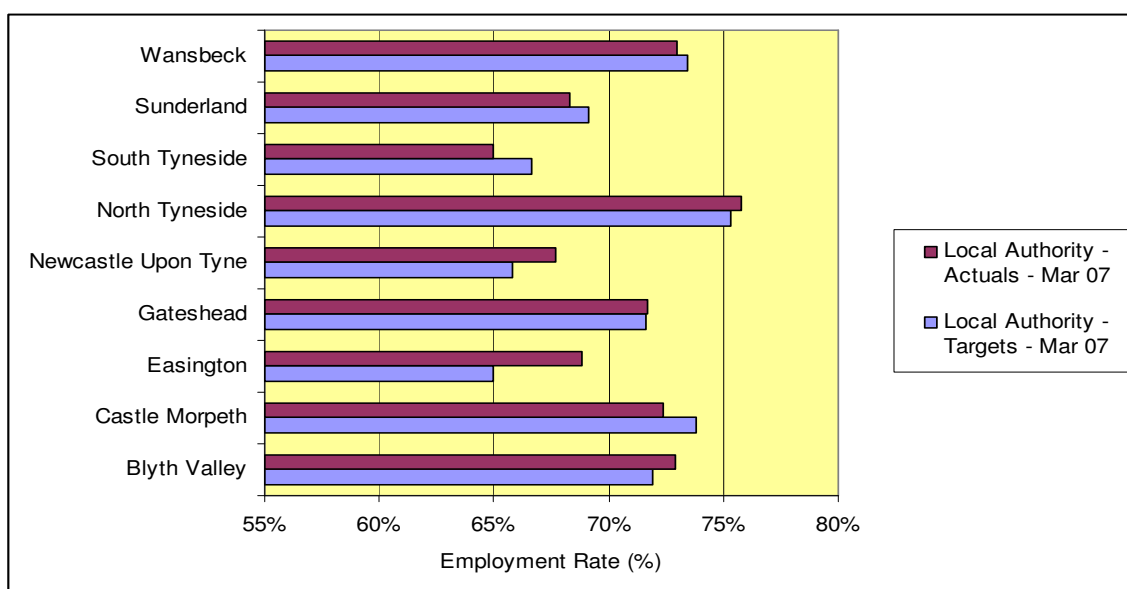
Area	Baseline – Sep 06	Profiled – Jun 09	Profile - % increase/ decrease	Target – Jun 09	Target – overall % increase
City Region	69.7%	69.5%	-0.2%	70%	0.3%

Progress to date against the target set by DWP has been good with employment rates of 69.7% and 70.0% recorded in December 2006 and February 2007 respectively. The City Region is therefore currently on track to achieve the target figure set for June 2009.

In addition to the overall City Region target, the Employment Rate target has been broken down to Local Authority level and profiled for each quarter up to June 2009 to provide an indication of what is required at a local level to contribute to the overall achievement of the City Region target.

Table 5 below shows a mixed picture with 5 of the nine authorities exceeding their expected position in March 2007. Overall, the picture is again one of progress towards the 2009 target.

**Table 5 – Employment Rate – Local Authority Actuals against Targets in March 2007**



### Ethnic Minority Groups

Work towards the detail of targets in this area is still being completed. Each of the Local Authorities (9) with priority wards in the City Region have produced Project Delivery Plans, which contain details on how they will spend their Deprived Areas Funding Allocations in 2007-08. The plans contain details on expected outputs, such as client engagement, job outcomes, participation in training etc.

It is the intention that an ethnic minority target will be attached to these outputs, which will relate directly to the proportion of the resident population from the ethnic minority community in that area. These figures will be taken from ONS Census 2001 data.

In addition to the above, specific research is being commissioned in the City Region to inform future projects/activities and develop targeting of ethnic minority communities. The Employment and Skills Executive Team will continue to monitor and feed into this research.

## Economic Activity

The City Region Target is to increase the Economic Activity Rate by 2% from 75.4% in September 2006 to 77.4% in June 2009. This includes a profiled increase of 1.5% and a 0.5% stretch target increase.

The target is an aggregation of the economic activity rates for the nine local authorities, which contain the priority wards identified as being the most deprived in the City Region.

Table 6 below shows the baseline position for September 2006, the profile for June 2009 (what we could expect to happen without any intervention) and the target for the City Region for June 2009.

**Table 6 – Economic Activity Target – Tyne and Wear City Region**

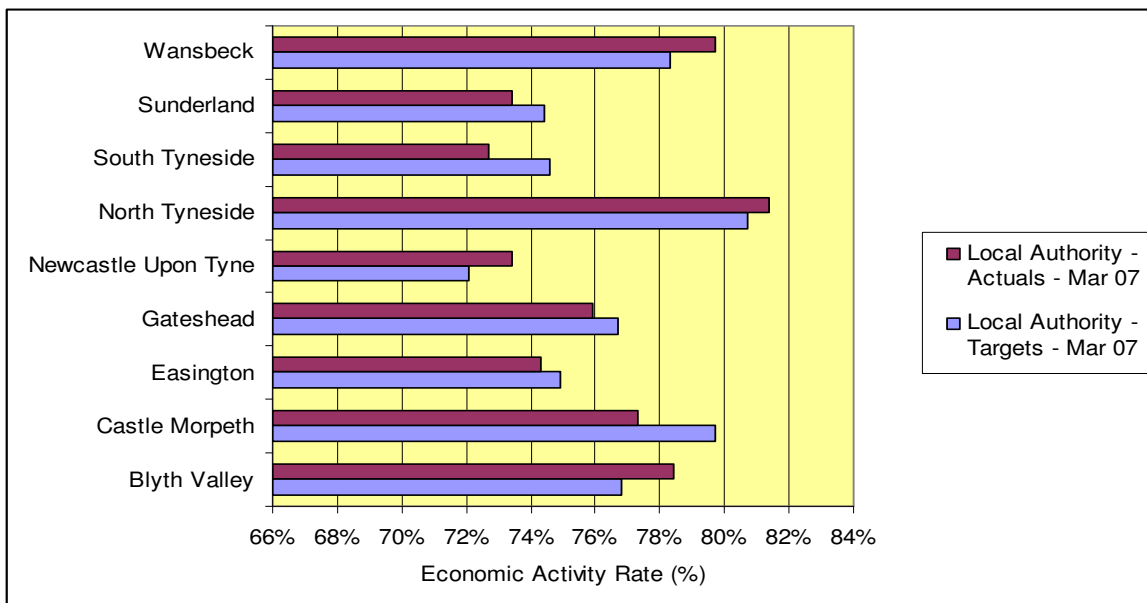
Area	Baseline – Sep 06	Profiled – Jun 09	Profile - % increase	Target – Jun 09	Target – overall % increase
City Region	75.4%	76.9%	1.5%	77.4%	2.0%

Progress to date against the Economic Activity target has been good with a rate of 75.6% maintained in December 06 and February 2007 against profiles of 75.5% and 75.7%.

In addition to the overall City Region target, the Economic Activity Rate target has also been broken down to local authority level and profiled for each quarter up to June 2009 to provide an indication of what is required at a local level to contribute to the overall achievement of the City Region target.

Table 7 below, similar to the Employment Rate, shows a mixed picture with four of the nine authorities exceeding their expected position in March 2007. Overall, the picture is again one of progress towards the 2009 target.

**Table 7 – Employment Rate – Local Authority Actuals against Targets in March 2007**



## Child Poverty

A measure of the numbers of working age families with children dependant on key benefits is being used as a target for Child Poverty in the City Region.

The City Region target is to reduce the number of working age families with children dependant on key benefits by 13% between February 2007 and May 2009. This includes a 10% profiled reduction with a 3% stretch target reduction. The reduction in numbers is from 32,970 families in February 2007 to 28,684 in May 2009.

The target is an aggregation of the figures showing the numbers of families with children dependant on key benefits for the nine local authorities, which contain the priority wards identified as being the most deprived in the City Region.

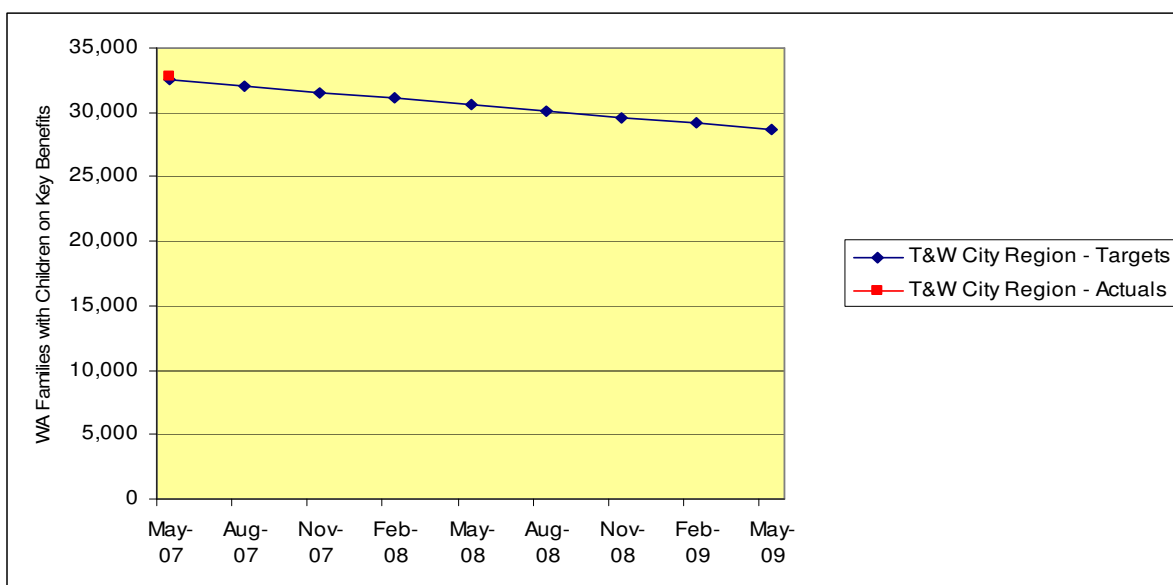
Table 8 below shows the baseline position for February 2007, the profile for May 2009 (what we could expect to happen without any intervention) and the target for the City Region for May 2009.

**Table 8 – Child Poverty Target - Tyne and Wear City Region**

Area	Baseline Feb 07	Profiled May 09	Profile - % increase/ decrease	Target – May 09	Target – overall % increase/ decrease
City Region	32,970	29,673	-10.0%	28,684	-13.0%

Table 9 shows progress to date against these targets, which have been profiled for each quarter to enable the City Region to monitor its progress towards the final May 2009 figure. It is very early days in terms of monitoring progress on this target, but initial indications are showing that the City Region is slightly behind profile with 32,770 families recorded against a profile of 32,493 for May 2007.

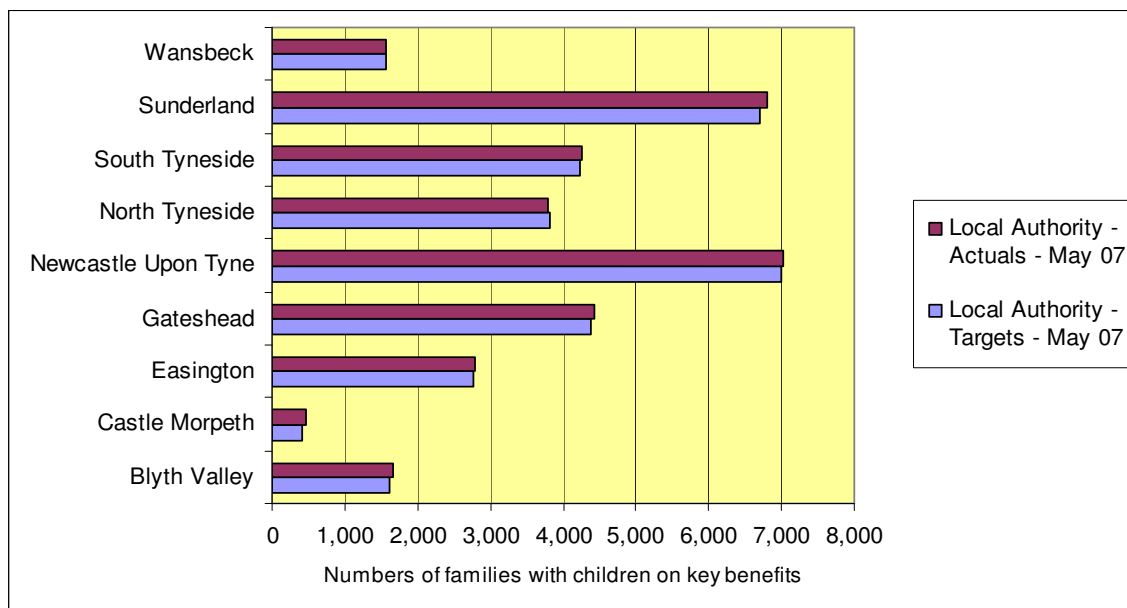
**Table 9 – Number of Working Age Families with Children dependant on Key Benefits – City Region Actuals against Targets to May 2007**



In addition to the overall City Region target, the Child Poverty reduction targets have been broken down to local authority level to provide an indication of what is required at a local level to contribute to the overall achievement of the City Region target.

Table 10 below shows that the Local Authorities are very close to achieving the position required to maintain progress towards the May 2009 target. Two local authority areas have exceeded the profile position calculated for May 2007.

**Table 10 – Number of Working Age Families with Children dependant on Key Benefits – Local Authority Actuals against Targets in May 2007**



### Skills and Qualifications

The City Region is using the various skills level attainment figures to measure its progress on skills and qualifications.

The City Region's targets are to increase the percentage of the working age population with a Level 1 qualification and above by 1.9%, a Level 2 qualification and above by 2%, a Level 3 qualification and above by 1.7% and a Level 4 qualification and above by 1.3%. All of these targets include a defined profiled increase and a 0.3% stretch target.

The targets are an aggregation of the skills level attainment figures for the nine local authorities, which contain the priority wards identified as being the most deprived in the City Region.

Tables 11 to 14 below show the baseline positions for December 2006, the profiles for June 2009 (what we could expect to happen without any intervention) and the targets for the City Region for June 2009.

**Table 11 – Skills and Qualifications – Level 1 and Above – Tyne and Wear City Region**

Area	Baseline – Dec 06	Profiled – Jun 09	Profile - % increase/decrease	Target – Jun 09	Target – overall % increase/decrease
City Region	78.9%	80.5%	1.6%	80.8%	1.9%

**Table 12 - Skills and Qualifications – Level 2 and Above – Tyne and Wear City Region**

Area	Baseline – Dec 06	Profiled – Jun 09	Profile - % increase/decrease	Target – Jun 09	Target – overall % increase/decrease
City Region	63.3%	65.0%	1.7%	65.3%	2.0%

**Table 13 - Skills and Qualifications – Level 3 and Above – Tyne and Wear City Region**

Area	Baseline – Dec 06	Profiled – Jun 09	Profile - % increase/decrease	Target – Jun 09	Target – overall % increase/decrease
City Region	41.3%	42.7%	1.4%	43.0%	1.7%

**Table 14 - Skills and Qualifications – Level 4 and Above – Tyne and Wear City Region**

Area	Baseline – Dec 06	Profiled – Jun 09	Profile - % increase/decrease	Target – Jun 09	Target – overall % increase/decrease
City Region	22.4%	23.4%	1.0%	23.7%	1.3%

At this stage it is too early to provide an indication of progress towards the skills and qualification targets. However, data for December 2007 will be available in early 2008, which will enable us to give a clearer indication of progress.